

Welcome to

TAPNELL FARM

ISLE OF WIGHT

TAPNELLFARM.COM



Welcome

Inside this pack you'll find some useful information to make your stay as relaxing, or action packed, as possible. We really advise you take the time to read through this booklet (perhaps with a mug of tea or a glass of wine) as it will save you a lot of time!

For opening times and further information:
Tom's Eco Lodge
The Cow Restaurant & Bar - Burgers, Steaks, Vegetarian & Vegan
Tapnell Farm Park - Award-winning all weather family attraction
Isle of Wight Aqua Park
Archery & Axe Throwing, Football Golf and Clay Pigeon Shooting
www.tapnellfarm.com or ask a member of staff

If you have any questions please don't hesitate to contact:
 Monday to Friday 9am to 5pm, Saturday and Sunday 10am to 4pm: 01983 758729
 Out of hours: Chloe 07947090736
We hope you enjoy your stay!



Contents

- The History of Tapnell Farm 4
- What to do at Tapnell Farm 6
- Farm Map 7
- Tapnell Farm Park 8-9
- Isle of Wight Aqua Park 10
- Archery + Axe Throwing, Football Golf, Clay Pigeon Shooting 11
- The Cow Restaurant & Bar, Farm Shop 12-13
- Best Places for Breakfast 14
- The Best Cafés for a Cup of Tea/Coffee and Lunch 15
- Best Places for Posh Nosh 16
- Further a Field but worth the drive 17
- Best Village Pubs with Tasty Grub 18
- Local Hotspots 19
- Fast and Easy Takeaway 20
- Feeling Thirsty 21
- Activities for all ages 22
- Activities to help you unwind 23
- Hidden Gems 24
- Best Swimming Beaches 25
- Things to do for all the family 26-27
- Tapnell Trail Map 28
- Walks on the Isle of Wight 29
- Cycle Hire and Maps 30-31
- For Peace of Mind 32





The History of Tapnell Farm

The Turney family has been in farming for over one hundred years and we took over the care of Tapnell and East Afton Farms in 1982. At its peak, the farm milked 800 cows and produced 24,000 litres of fresh wholesome milk 365 days of the year, no exceptions!

Today, we no longer milk cows at Tapnell, but the Farm has become the Isle of Wight's leading eco-tourism business and home to award-winning Tom's Eco Lodge, Tapnell Farm Park, The Cow Restaurant & Bar, Isle of Wight Aqua Park, Football Golf, Archery and Axe Throwing.

Sustainability is at the heart of everything we do, whether taking water from our bore hole to supply the farm, using the sun to make electricity for hundreds of homes, powering our heating systems with our biomass boiler or growing over 30 acres of new woodland and hedgerows. It's ingrained in everything we do.

The golden rule for us is to pass on our farm in better environmental and productive health than it was at the beginning of our life's tenure.

Sitting on the site of the 1970 Isle of Wight pop festival, our farm is surrounded by a patchwork of fields that form the pasture and meadows of the countryside, which gently undulate with Tapnell Down to the south and Hamstead Heritage Coast and coastal woodlands to the north. The picturesque chalk down grassland and forests to the south are not only part of the protected landscape but are also Sites of Special Scientific Interest and described by Natural England as being "probably the best example in Britain of chalk grassland under maritime influence."



Things to do at the farm

Guests discount codes will be provided in advance or can be found in your Welcome pack. If in doubt, please contact the accommodation team.
For details of attractions and to book: www.tapnellfarm.com/play

Tapnell Farm Park, Coffee House & Farm Shop

Come rain or shine, there's so much to see and do, with just as much indoors as outdoors, including straw bale barn, go-karts and indoor soft play. Plus join our keepers for daily animal activities. Guests pay admission once and get unlimited entry during stay



Isle of Wight Aqua Park

The Island's only outdoor, floating Aqua Park! Wetsuits and buoyancy aids provided. Age 7+. **Guests receive 25% discount.**



Football Golf

The Island's first Football Golf course. 9 and 18 holes options. Under 14's must be accompanied by an adult. **Guests receive 10% discount.**



Tapnell Trail

Enjoy our popular 6 mile circular walking route that runs right through the middle of Tapnell Farm. Suitable for walkers of all abilities. Pick up a map from The Visitor Hub.



Clay Pigeon Shooting

Top Targets, based at the farm: shoot some clays from our straw traps or take your aim at our rifle shooting! **Guests receive 10% discount.** Booking Essential!



The Cow Restaurant, Bar & Clubhouse

Tuck into our delicious award-winning burgers – gluten free, vegetarian and vegan options too.

Book your table online: www.tapnellfarm.com/eat



Archery & Axe Throwing

Whether you're a complete novice or modern day Robin Hood, our experienced team will ensure you get the most from your session. Minimum 2 per session. Age 11+. **Guests receive 25% discount.** Booking Essential!



Book in advance...

Make your stay with us extra special!

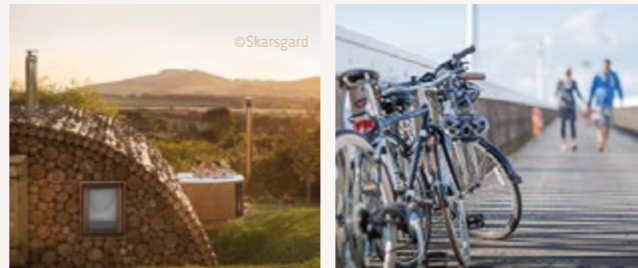
Hot Tub Hire: You are welcome to contact third party hot tub provider.

Bike Hire: Make the most of the rolling countryside, hire a bike and explore!

Contact Wight Cycle Bike Hire: 01983 761800

Food & Gift Hampers: please enquire or see website:

www.tapnellfarm.com/extras



Weddings, Corporate Away Days and Retreats at our neighbouring sister farm

East Afton Farmhouse with 3 event barns and adjoining cottage is a wonderful venue for a big country house wedding and is licensed for ceremonies. Options include four day exclusive use hire from Thursday – Monday, or venue hire only Monday – Wednesday. Available all year round with capacity up to 200 guests. Accommodation for up to 20 included in exclusive use hire. For information:

www.eastaftonfarmhouse.com



FARM GUIDE

WELCOME TO TAPNELL FARM



TAPNELL FARM
ISLE OF WIGHT

- 1 Farm Park
- A The Paddocks
- B Coffee House
- C Soft Play Barn
- D Adventure Barn
- E Animal Barn
- F Event Barn
- G Farm Shop
- 2 Aqua Park
- 3 Football Golf
- 4 Archery & Axe Throwing
- 5 Clay Pigeon Shooting
- 6 The Cow Restaurant
- 7 The Hub - Guest Services & Visitor Information
- 8 The Clubhouse

Tom's Eco Lodge & Accommodation

- 9 Tapnell Manor
- 10 Cabins
- 11 Eco Pods
- 12 Modulogs
- 13 Safari Tents
- 14 Dairyman's Cottage
- 15 The Lookout
- 16 Poachers Lodge
- 17 Poachers Perch Domes
- 18 Wendy House
- 19 Camp Tapnell

East Afton Farmhouse WEDDINGS & EVENTS

- 21 East Afton Farmhouse
- 22 The Annex
- 23 The Piglets
- 24 The Snug

P Free Parking

PLEASE NOTE: Dogs are not permitted in the Farm Park attraction (Guide dogs only)



Enjoy the Tapnell Trail
Download the map here

Each attraction at Tapnell Farm has its own opening times and admission rates. Check for details at www.tapnellfarm.com/play



TAPNELL FARM PARK

ALL WEATHER INDOOR & OUTDOOR PLAY

Set in acres of beautiful countryside, surrounded by amazing views of the Island, Tapnell Farm Park provides a safe, all-weather, fun filled attraction for all the family to enjoy.

There's so much to see and do, areas to explore and adventures to be had, with just as many indoors as outdoors - perfect for a full day's entertainment.

Don't miss our daily activities where you can meet the animals, greet and learn about our favourite furry friends - and make new friends too!



Feeling Hungry?

TAPNELL FARM PARK

COFFEE HOUSE

The Coffee House is set right in the heart of the Farm Park, right next to our Play Barn, Animal Barn and Paddocks.

We offer a huge range of barista coffees, hot and cold drinks and a great selection of snacks, hot pastries, cakes and traybakes.

We serve a wide range of ice creams and lollies in the Coffee House and our Coffee Hut near the straw bale adventure barn will be open during the height of the season.

Don't miss our daily activities where you can meet the animals - including Paddock Feeds, Bugs & Beasties, Meerkat Talks, Wallaby Feeding and more!

www.tapnellfarm.com/play

THE ISLE OF WIGHT'S BOUNCIEST AND WETTEST ATTRACTION IS HERE!

Whatever the weather, you're guaranteed to have a blast at the Isle of Wight Aqua Park!

ISLE OF WIGHT AQUA PARK

TAPNELL FARM

Over 20 obstacles to tackle, with plenty of giant free-fall slides and fun (but challenging!) elements to explore!



Great fun for confident swimmers aged 7+

Everyone will enjoy the thrill of the slip and slide action as you take on the epic challenge of the course.

Our on-site facilities include changing rooms, showers and toilets and there's a spectator area for those watching the fun unfold. To save time, please arrive in shorts and t-shirt or swimwear ready to put a wetsuit and buoyancy aid over the top.

All sessions must be booked online in advance.

Wetsuits and buoyancy aids are supplied and you'll be given a safety briefing before-hand by one of our fully qualified team.

ISLE OF WIGHT FOOTBALL GOLF



Great inclusive activity, suitable for all ages as long as they can kick a ball! Football Golf uses the same rules as golf but instead players don't use a club, they kick a ball with the fewest number of kicks/shots possible to score in the hole.

All sessions must be booked online in advance

Under 14's must be accompanied by a responsible adult

We recommend group sizes of 4-5 max

Choose from either a 9-hole short course, a 9-hole long course or try your foot at both!



ARCHERY + AXE THROWING



Delivered in our purpose built ranges, housed inside a covered barn. Sessions run whatever the weather and are led by experienced and trained staff, ensuring quality coaching. Please ask about extra guest sessions if closed

All sessions must be booked online in advance

Minimum booking of 2 people

Sessions last 50 minutes and include equipment and tuition

Axe Throwing and Archery are different activities that need to be booked separately

All participants must be aged 11+



All equipment is provided and our team will ensure your introduction to clay pigeon and target shooting is safe and that you feel comfortable. An experienced instructor will be by your side throughout the activity

We have different sizes and gauges of shotguns rifles and pistols to suit each individual and we are happy to include children 10 years of age and up.

Weekends Only

Tucked away at the edge of Tapnell Farm is an established shooting ground operated by Top Targets



CLAY PIGEON SHOOTING



THE COW

TAPNELL FARM

ONE OF THE ISLAND'S UNIQUE RESTAURANTS, SET IN A CONVERTED SWISS BARN, SURROUNDED BY STUNNING VIEWS.

The Cow champions the finest home grown and locally sourced produce and is renowned for its delicious award-winning burgers, including gluten free, vegetarian and vegan choices.

Booking is essential during busy times tapnellfarm.com/eat

Dogs welcome!



Farm Shop

Our Farm Shop is now located in the Farm Park gift shop and is packed with holiday essentials and plenty of treats, to make your stay easier.

You'll find fresh produce - locally sourced meats, cheeses and eggs.

Plus a good selection of laundry basics, toiletries and local gifts to take home.

Why not order a luxury Farm Shop food hamper ahead of your stay? Choose from a selection, including Deli, Ultimate Brunch, Sparkling Breakfast, BBQ and Campfire!

You can also enjoy fresh eggs from our chickens every morning - if they've laid any eggs! Available from the The Hub.

Please see welcome pack or website for opening times.



CHILDREN'S MENU

Our children's menu includes mini sizes of our burgers.



THE WIGHT HERD

Take a wander round outside and check out the UK's first 'art herd'.



'Great Food, Great Beer, Great Desserts. Funky place to eat, drink and be merry and certainly we will go again.'



Best Places for Breakfast and Brunch

The first meal of the day is the most important meal of the day, that's a fact! Make sure to make the most of the Island's breakfast offerings because there are some seriously tasty options including the best Eggs Benedict and full English this side of The Solent. Here are a few ideas to pep you up for the day ahead.



Cook and Baker, Godshill PO38 3HZ | 01983 840080

Walk in only cafe, no reservations required. Open 9-4ish, however, the kitchen stops taking orders at 3pm. When it's really busy we sometimes sell out as we prepare all our food fresh.



Off The Rails, Yarmouth PO41 0QT | 01983 761600

Enjoy a spot of bird watching across the wetlands while eating a full English. Off The Rails also cooks up a mouth watering vegetarian breakfast – you can walk back to Tapnell Farm afterwards if you feel like burning a few calories!



Gossips Café, Yarmouth, Freshwater Bay PO41 0NS | 01983 760646

Fancy a full English before catching the ferry from Yarmouth? This café has the perfect location for a greasy fry up before a long trip home! At the start of the pier, the café has great views of the solent.



The Bay by Seasons, Ward Road, Totland Bay PO39 0AR

Serving Street Food and Classics, The Bay by Seasons will provide you with all the fun, bright holiday vibes you enjoy at The Airstream, with the added bonus of a stunning sea view, looking out over the Solent onto the beautiful British coast, all year round.



Harvey Browns Kitchen, Arreton PO30 3AR | 01983 527530

Open for breakfast from 8:30am to 11am and offer a full range of breakfasts to suit all tastes. From a classic Full English or Veggie Fry to Eggs Benedict, Royal or Florentine as well as cereals, breads and a range of freshly-made pastries.

The Best Cafes for a Cup of Tea / Coffee and Lunch

Tea is important here in England – we are basically addicted to the stuff. So below are a few recommendations for the best cuppa on the Island. And for those who need a more concentrated caffeine injection we've included a couple of coffee joints as well.



Dimbola Tearoom, Freshwater Bay PO40 9QE | 01983 756814

The refurbished Dimbola Tearoom was once the salon of Julia Margaret Cameron where she entertained her guests. Enjoy delicious homemade cakes, cream teas and light lunches with views of Freshwater Bay.



Chessell Café PO41 0UE | 01983 531248

Set in beautiful tranquil surroundings, with the most amazing selection of homemade cakes on offer each day, along with fantastic coffee, breakfasts and lunches,



The Piano Café & Mezze Bar, Freshwater Bay PO40 9PY 01983 472874

Sam, the owner, is a good friend of Toms and knows a thing or two about coffee. We fully endorse his skills when it comes to rustling up the best caffeine shot in the area!



Loaph, Godshill PO38 3HH | 01983 242859

Coffee + Kitchen. coffee + cake brunch and weekly sandwich special.



The Garlic Farm, Newchurch PO36 0NR | 01983 865378

Winner of various awards including being 'Local Gem' in the 2023 Good Food Guide, winning best Gastronomic experience on the Isle of Wight in 2019, voted Best Restaurant 2020 in the Red Funnel My Isle of Wight Awards.



Best Places for Posh Nosh

Sometimes it's worth forking out a little extra to mark a special occasion such as a birthday or wedding anniversary. But if you're staying at Tapnell Farm you're most likely on holiday, so go crazy! You don't need an excuse to go big! Below are fine dining options that will leave you feeling incredibly well catered for.



The Hut, Colwell Bay PO40 9NP | 01983 898637 - Seasonal Opening Times
Sunny seaside hangout in the day and atmospheric restaurant in the evening serving mouthwatering cuisine from lobster to catch of the day.



The Terrace, Yarmouth PO40 ONT | 01983 303013
The Terrace is the quayside restaurant in Yarmouth with amazing views across the harbour and out to the Solent. Friendly staff, excellent menu using locally sourced produce and great atmosphere.



The George Hotel & Beach Club, Yarmouth PO41 OPE | 01983 760331
Family friendly brasserie style restaurant with uninterrupted views of the Solent, beautiful walled garden terrace. The food is formal dining in a relaxed atmosphere.



Salty's Pizzeria & Bar, Yarmouth PO41 OPB | 01983 761550
Delicious sourdough pizzas crafted with love within the yachting town of Yarmouth. Open for lunch, dinner and for takeaways. Enjoy the live music on Friday and Saturday evenings from 8pm up until September.



On the Rocks, Yarmouth PO31 7BG | 01983 298574
On the Rocks has been part of Yarmouth for two decades. In 2021 it was refurbished by talented interior designer Josie Da-Bank. Yarmouth's one and only hot stone steakhouse and seafood grill, with the ethos of using as much local produce and supporting as many local suppliers as we can.



Coast, Cowes PO31 7BG | 01983 298574
You can drop in for a slice of cake with a cappuccino, enjoy a hearty lunch or a three course dinner, as the relaxed informal style of their bar & dining room is designed for everyday eating.

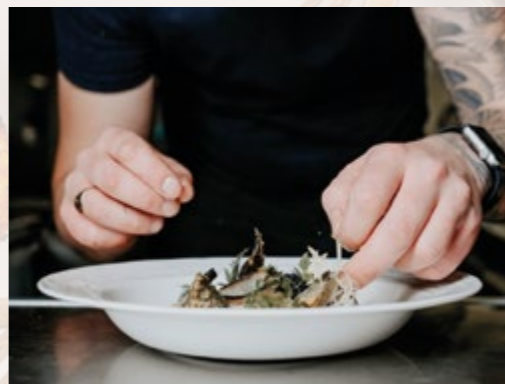


Further a Field but worth the drive

Sometimes you just have to be honest – Tapnell Farm boasts the best views on the Island! Our elevated position offers panoramas of the English Channel, mainland, Afton & Tennyson Downs, and the stunning Tennyson Monument. But we understand variety is the spice of life so here are a few other options with idyllic lookout spots nearby.



Smoking Lobster, Ventnor PO38 1JT | 01983 855938
Seafood specialists with great views out to sea on Ventnor Esplanade. They also have restaurants in the High Street, Cowes.



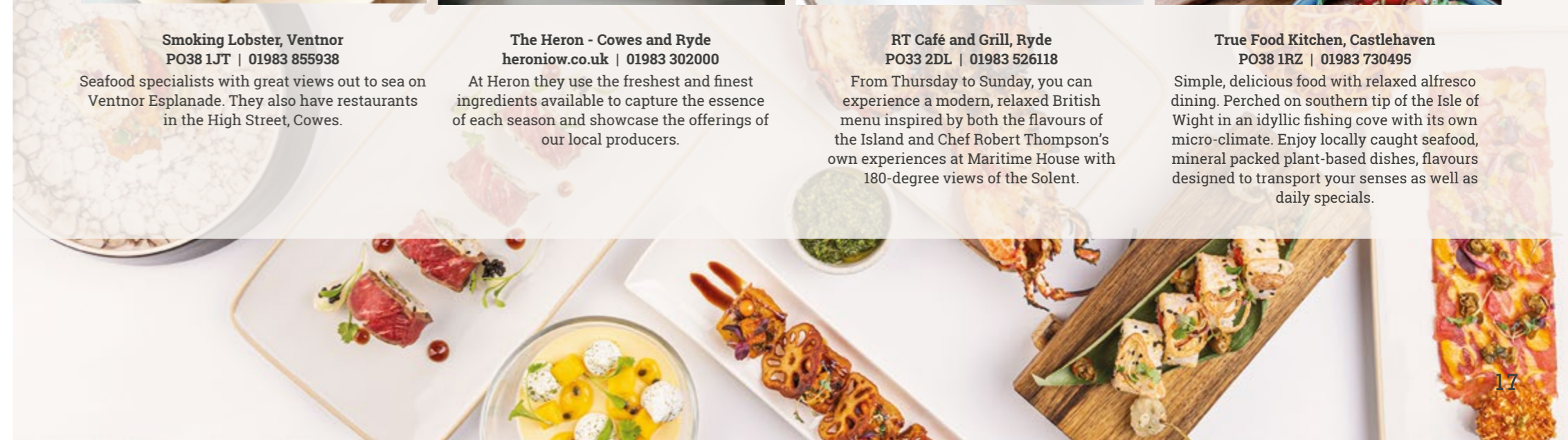
The Heron - Cowes and Ryde heroniow.co.uk | 01983 302000
At Heron they use the freshest and finest ingredients available to capture the essence of each season and showcase the offerings of our local producers.



RT Café and Grill, Ryde PO33 2DL | 01983 526118
From Thursday to Sunday, you can experience a modern, relaxed British menu inspired by both the flavours of the Island and Chef Robert Thompson's own experiences at Maritime House with 180-degree views of the Solent.



True Food Kitchen, Castlehaven PO38 1RZ | 01983 730495
Simple, delicious food with relaxed alfresco dining. Perched on southern tip of the Isle of Wight in an idyllic fishing cove with its own micro-climate. Enjoy locally caught seafood, mineral packed plant-based dishes, flavours designed to transport your senses as well as daily specials.





Best Village Pubs with Tasty Grub

The Isle of Wight is lucky enough to have a few breweries producing wonderful ales from Yates Brewery (Spring Fever, Sun Goddess, Golden Ale) to Goddard's Brewery (Squirrel, Inspiration, Ale of Wight). There are dozens of pubs on the island but we have chosen five of the best where you can neck an ale in serene surroundings only a stones throw from Tapnell Farm.



The Buddle Inn, Niton, PO38 2NE | 1983 730243
Historic, stone-walled pub with open fires, serving fresh, seasonal local cuisine, plus function room. Sunny beer garden with views out over the English Channel.



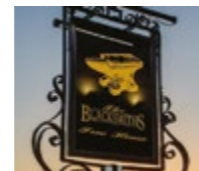
The Wheatsheaf Inn, Yarmouth PO41 0PH | 01983 638359
Offering a unique, quirky and informal every-day bar and dining experience. Bar and tap room with a variety of craft beer and small plates. Enjoy something more substantial for lunch or dinner in the restaurant, with their hand-picked wine list.



The Red Lion, Freshwater PO40 9BP | 01983 754925
Few pubs can match the picturesque setting of Freshwater's Red Lion pub - it's tucked away next to a church and reachable via small country lanes one end and sleepy town thoroughfares the other. You can walk there from Tapnell!



The Pointer Inn, Newchurch PO36 0NN | 01983 865202
The Pointer Inn is one of the oldest, most historic pubs on the isle of Wight. Famous for its food, ales and friendly service, this was Fuller's Country Village Pub of the Year in 2012 & 2013. It also was voted one of the best UK pubs for Sunday lunch.



The Blacksmith, Carisbrooke PO30 5SS | 01983 529263
400 year old pub run by a well established couple on the Isle of Wight dining scene, with over 10 years experience as pub landlords.. Proud winners of Best Pub at the Isle of Wight Awards in 2021.



The Highdown Inn, Totland Bay PO39 0HY | 01983 752450
A small traditional country pub set in rolling countryside. Daily specials including seasonal local game and seafood.



Local Hotspots

Relax, unwind and take in the most spectacular views as you enjoy some of the Island's finest local produce.



**Fins Beach Café
PO36 9JT**
With an enviable beachside location and a delicious menu featuring smoothie bowls, hearty breakfasts and vegetarian plates, it offers chilled summer vibes throughout the entire year.



**Warren Farm, Alum Bay
PO39 0JB | 01983 753200**
Offering a range of hot and cold drinks, cake and snacks – the perfect pit stop after a walk to the Needles. Plenty of outdoor seating in the garden, which have stunning views of Tennyson Downs.



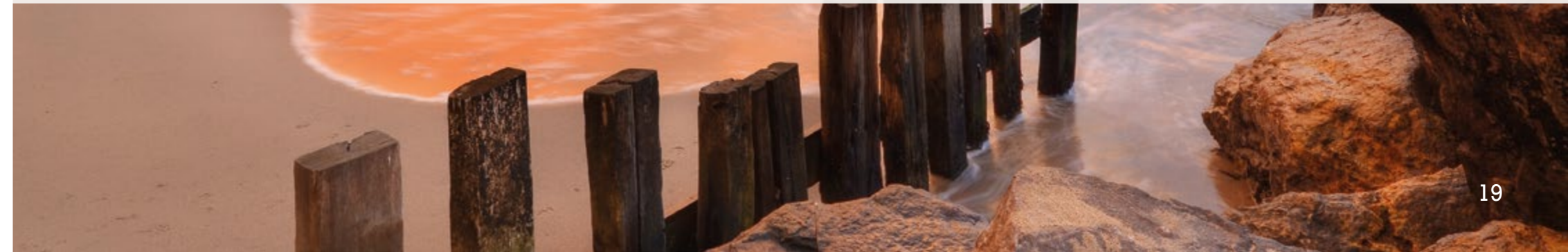
**Hot Box Bakery, Bembridge
PO35 5SD | 01983 872644**
A busy traditional craft bakery and tea rooms serving fresh bread, cakes and savouries alongside light meals and hot and cold beverages.



**Tradewinds Beach Café, Sandown
PO36 8PL | 07928 174243**
The quintessential beach bar with a relaxed atmosphere. Right on the beach front so stunning sea views across Sandown Bay.



**The Bandstand, Sandown
PO36 8AT | 01983 406875**
Dine at The Bandstand Café Restaurant overlooking Sandown Bay. Serving: coffee, cakes, pastries, light lunches, varied dishes and special occasion meals.





Fast and Easy Takeaway

You certainly don't have to splash the cash to enjoy the best of the Island. In fact, most of the activities within this guide are all very reasonably priced and you'll find a number of family/group discounts. But we understand that eating out with a big family can add up so below are a few options where your credit card will still be intact after paying for the bill.



Rainbow Fish & Chip Shop, Freshwater PO41 9UR | 01983 752257
Close by in the local village Freshwater serves locally caught fish open lunchtimes and evenings. Collection only. Closed Sundays and Mondays.



Sunbo, Totland PO39 0AT | 01983 759111
A Chinese we would definitely recommend. Closed Mondays.



Wightwood Pizza | 07955 379642
A vintage Citroen van with a wood fired pizza oven. On a Friday night in the summer, they park up at Freshwater Bay from 5am - 8pm. Check out their Facebook page to find out the other locations they'll be at that week as these change. Pre-booking advised, they are also often at Yarmouth Harbour.



Jaffran Indian Restaurant & Takeaway, Freshwater PO40 9AS | 01983 755121
Open daily.



Fuoco Pizza, Freshwater PO40 9UT | 01983 214430
We specialise in homemade wood fired pizza using fresh local ingredients.



Double Dragon, Freshwater PO40 9AB | 01983 754141
All made with fresh ingredients, Double Dragon takes pride in serving delicious and high quality Chinese food.



Thai Journey, Godshill PO38 3HH | 01983 645550
Dishes are prepared fresh with only the finest ingredients, ensuring the most vibrant and bold flavors in every bite.



Feeling Thirsty

Island destinations to enjoy a locally distilled Gin and Tonic, freshly brewed fine ale, bartender mixed cocktail or a glass of wine.



Isle of Wight Distillery PO33 1PX | 01983 613653
The only distillery on the Island was licensed in 2014 by long term friends Xavier Baker and Conrad Gauntlett. Listen to talks about the distillery and taste the Island-inspired spirits.



Goddards Brewery PO36 0LT | 1983 611011
Goddards is the oldest brewery on the Isle of Wight and one of the first independent craft beer producers in the UK.



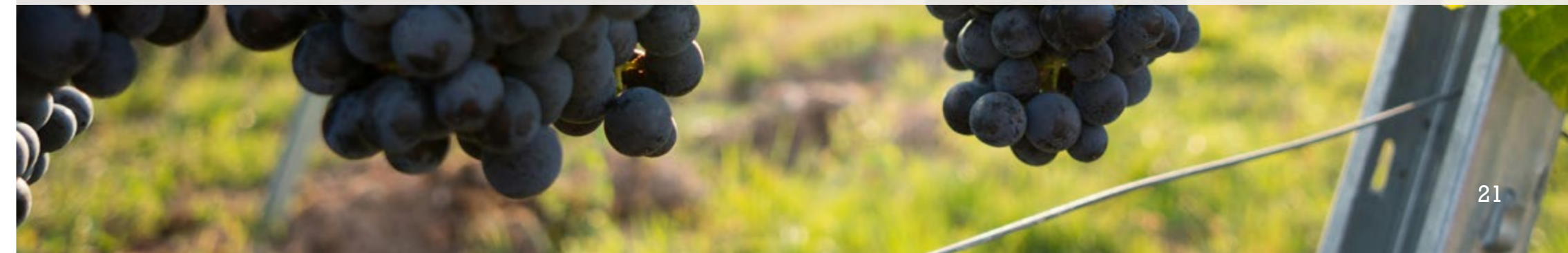
Adgestone Vineyard PO36 0ES | 01983 402882
One of the oldest working Vineyards in the UK and a producer of award winning wines.



Drunken Lobster PO38 1ST | 01983 852500
Ventnor town's wine, sake and cocktail bar, featuring a Japanese Yakatori grill and private dining room.



Terrace Ventnor PO36 8AT | 01983 406875
A 300-bottle wine shop in an iconic Victorian villa on the seafront in Ventnor. There is a free wine tasting every evening at 6pm.



Activities for all Ages

No matter whatever your age or interests, there are plenty of things to do for everyone on the Isle of Wight.



Golf

There are 8 golf courses on Isle of Wight. The best 18 holes golf course is at Shanklin & Sandown Golf Club and the most reviewed golf course is only 10 minutes away at Freshwater Bay Golf Club.

www.freshwaterbaygolfclub.co.uk



Sailing

Cowes is known across the world as the home of sailing. To try out sailing and other water sports contact Tackt-Isle Adventures in Bembridge

www.tackt-isle.co.uk



Fishing

Black Rock Charters in Yarmouth provide all fishing equipment and bait. You don't need to bring a thing except refreshments. Simply make sure you dress for the weather!

www.blackrockcharters.co.uk



Jewellery

The Jewellery Cabin, Jewellery Teaching Studio, check out the course whilst you're here – or pre-book a private session.

www.thejewellerycabin.com



Pottery

Isle of Wight Pottery offer a wonderful way for family and friends to spend quality time together whilst learning how to make beautiful items from clay.

www.isleofwightpottery.com

Activities to help you unwind

Get creative and relax whilst you're here.. things to be pre-booked to enjoy on-site. Please email stay@tapnellfarm.com for more details.



Cocktail Making

Let our mixologist from The Cow Bar & Restaurant teach you how to make your favourite cocktail. All ingredients and equipment are provided.



Wight Apothecary

Pause and take a deep breath with your family, friends, or teammates as you immerse yourself in the art of blending essential oils to create a bespoke scented candle unique to you.



Yoga with Balance and Glo

Embrace summer in true island style and join our yoga and fitness instructors taking our yoga flows and signature Sweat + Stretch sessions.



Massage by Hayley Holistic

Holistic and beauty treatments in the comfort of your accommodation and conveniently worked around your busy activities.

Hidden Gems

Here's some of the Island's best kept secrets. You might have to try a bit harder to get to these but they are definitely worth it.



Steephill Cove, Ventnor | 17 miles away

Steephill Cove is an unspoilt fishing cove with a safe, sandy beach. With only a handful of cottages, deckchairs, beach huts, lobster pots and an old donkey there's not a slot machine, car or burger in sight. Surrounding the Cove are fantastic coastal walks. Go west to the Botanical Gardens or east to Ventnor.



St Catherine's Lighthouse, Niton | 14 miles away

The view from the walk down to the lighthouse is stunning - imagine dramatic cliffs and tumbling landslips with St Catherine's Lighthouse perched on the edge. Tours of the lighthouse are very reasonable; however, the best bit is soaking up the unspoilt surroundings.



Quarr Abbey, Fishbourne | 15 miles away

Quarr Abbey is often dismissed as just a monastery, however it is a beautiful picturesque spot for a stroll. They also have a gift shop and tearooms with tasty local produce to eat or take home.



Hamstead Point Beach | 5 miles away

A fascinating shoreline for fossil hunters and bird watchers. Not one to visit if you want to go for a swim or sunbathe, but if you have a young Christopher Columbus with you then this is the perfect spot!



Newtown Nature Reserve | 6 miles away

The only National Nature Reserve on the Isle of Wight. It is a beautiful retreat that has something to offer walkers, wildlife enthusiasts and historians or just those in search of peace and tranquility. You can wander past flower-rich hay meadows, through ancient woodlands with rare butterflies and red squirrels.



The Duver, St Helens | 20 miles away

Once a Victorian golf course the Duver is now maintained by the National Trust. The sand dunes are bordered on the south by Bembridge Harbour and the Solent to the north. There are the ruins of St Helens Old Church and sea wall with brightly coloured beach huts and an excellent beach café.

Best Swimming Beaches

You are never far from the sea on the Isle of Wight and as you might expect, there are some brilliant locations to enjoy a swim. It's hard to narrow down three because you only need to find a deserted stretch of coastline at sunset to dip your toes and you'll be in heaven. There are restrictions in place on the Isle of Wight's main resort beaches between 1st May and 30th September which prevents dogs being allowed to use them. However outside of this season dogs are welcomed as with any of the other beaches.



Colwell and Totland Bays | 5 miles away

You can reach Colwell and Totland Bays in a matter of minutes from Tapnell Farm and once there you will find a charming seafront that merges with a shallow expanse of water stretching far out into the ocean. It's possible to paddle out hundreds of meters and still be able to stand in the shallow waters. Head to The Hut afterwards for a glass of rosé, burger or sea food platter!



Compton Bay | 4 miles away

One of the Island's best kept secrets, Compton Bay is a two mile stretch of golden and dark sands framed by multi-coloured sandstone cliffs. If sand is not your thing, then you can relax on the grassy knolls overlooking the beach or climb on a board and surf some waves. Only a short drive from Tapnell.



Appley Beach, Ryde | 18 miles away

Ryde promenade stretches from the hovercraft terminal eastwards as far as Seaview. The main pleasure beach is from Appley to Puckpool. This fine sandy beach has numerous entrance points from the promenade. Deckchairs, sun loungers, windbreaks and other items can be hired on the beach. Watersports are popular towards the eastern end, especially kitesurfing.



Freshwater Bay | 3 miles away

Only a few minutes from Tapnell Farm, this bay has it all – cliffs, a long beach, shelter from the wind and a great swimming depth. Please be wary taking children to this beach as there can be a sudden dip followed by strong tides. Keep an eye out for the Wightwood pizza van where you can buy delicious, hand made pizzas on Friday evenings and the Beer Bus open at weekends. Above the bay is a horsebox coffee vendor open daily from 10:30.

Dog Friendly Beaches

Freshwater Bay | 3 miles away

Pebble beach with caves and rockpools that can be explored at low tides.

Compton Bay (Restricted) | 4 miles away

Accessed from car parks at either end.

Brook (Restricted) | 4 miles away

Sandy beach just along from Compton Bay with a rugged coastline and great views across the West of the Isle of Wight.

Fort Victoria | 5 miles away

Great walks and views across to the mainland.

Colwell Bay (Restricted) | 5 miles away (To right of slipway)

Quality Coast Award beach offers superb views across the Solent.

Players Beach | 16 miles away

Another of the Island hidden gems, tucked away below Ryde Golf Course at Binstead.

Bonchurch (Restricted) | 18 miles away

Horseshoe and Monks Bay beaches.

Bembridge | 19 miles away

Pebble and sand beach with a great collection of rock pools at low tide.

Seagrove | 19 miles away

Sandy expanse of beach located between the Seaview and St Helen's beaches.

Seaview | 19 miles away

Great sandy beach area, which is usually fairly quiet. The South beach is slightly more sheltered.

St Helens | 19 miles away

Sandy beach with excellent beach café. Easy access from here onto the sand dunes of the Duver.

Yaverland | 17 miles away

Easy access with large car park. Sandy beach and beach café.

Things to do for all the family

Coming to the Isle of Wight with the whole family is a good idea, there's so much to do together and you'll all be a lot closer at the end of it. From high-octane adventure sports to countryside rambling, there is something for every group.



The Isle of Wight Steam Railway PO33 4DS | 01983 882204
Take a Ride behind one of the vintage steam locomotives for a journey back in time. Breathe in the evocative smells of a real steam railway, settle back in beautifully restored Victorian and Edwardian carriages and enjoy a unique view of some of the Island's unspoilt countryside.



Carisbrooke Castle PO30 1XY | 0370 333 1181
Explore the castle at the heart of the Isle of Wight, steeped in history from the Norman Conquest to Charles I. Home to the famous Carisbrooke donkeys.



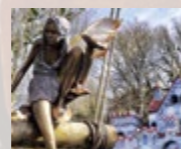
Goodleaf Tree Climbing, Ryde PO33 1ND | 0333 8001188
If you are after an even more spectacular view than Tapnell Farm has to offer it's worth trying Goodleaf Tree Climbing. Learn the ropes with qualified and experienced instructors who'll take you to the canopy in Ryde where you can enjoy views of the beautiful countryside and coast while relaxing in a tree top hammock.



The Garlic Farm Restaurant, Shop, and Café, Newchurch PO36 ONR | 01983 865378
The perfect place to take the entire family. You can grab some scrumptious food from the café or garlic inspired produce from the shop and the sprawling grounds are ideal for children to explore.



Wight Cycle Bike Hire PO41 0QT | 01983 761800
They offer day hire for £14, with free delivery island wide if the total fee is more than £25 (2 bikes or more). Booking needs to be made before 3pm the day before. Hire includes: helmet, lock, maps and maintenance support. 10% off for guests & free delivery



Blackgang Chine PO38 2HN | 01983 730330
Overlooking the south coast of the Island, Blackgang Chine offers an eclectic mix of attractions, magical theme worlds, exciting rides and new adventures around every corner.



Hill Farm Stables Horse Riding, Freshwater PO40 9TQ | 01983 752502
There are some great opportunities to go horse riding on the island – what better way to discover the awe-inspiring coast and countryside.



iSurf and Freshwater Bay Coasteering PO36 8AH | 07968 609169
Join one of the group surfing lessons which are great fun. A coasteering session involves sea swimming along the cliff line around the headlands, scrambling across the rocks, discovering the caves.



Goddards Brewery, PO36 0LT | 01983 611011
Goddards have been brewing fine real ales (craft beers) since 1993. Complete with brewery restaurant, The Firkin Deck restaurant and Bar as well as a state of the art visitor attraction and shop.



Osborne House, PO32 6JX | 0370 333 1181
A visit to Osborne offers something for everyone to enjoy. Inside the house, get an intimate glimpse into royal life as you explore private apartments and grand reception rooms lined with furnishings and artworks from the Royal Collection.



Monkey Haven, PO30 2NB | 01983 530885
An award-winning sanctuary for monkeys, birds and reptiles. Animals include eagle-owls, gibbons and lemurs, events include keeper talks and marmoset encounters.



Amazon World, PO36 0LX | 01983 867122
Amazon World Zoo Park has a huge range of unusual rare and exotic animals. At the last count it was somewhere in the region of 200 different species, spanning the entire animal kingdom!



Ryde Superbowl, PO33 2EL | 01983 617070
Ryde Superbowl offers full bowling facilities and a fully-licensed café-bar, open seven days a week, 364 days a year.



Dinosaur Isle, PO36 8QA | 01983 404344
Located in Sandown, purpose built Dinosaur Isle provides the space and facilities to properly display and conserve the rich geological collections. There are over 1000 fossils on display!



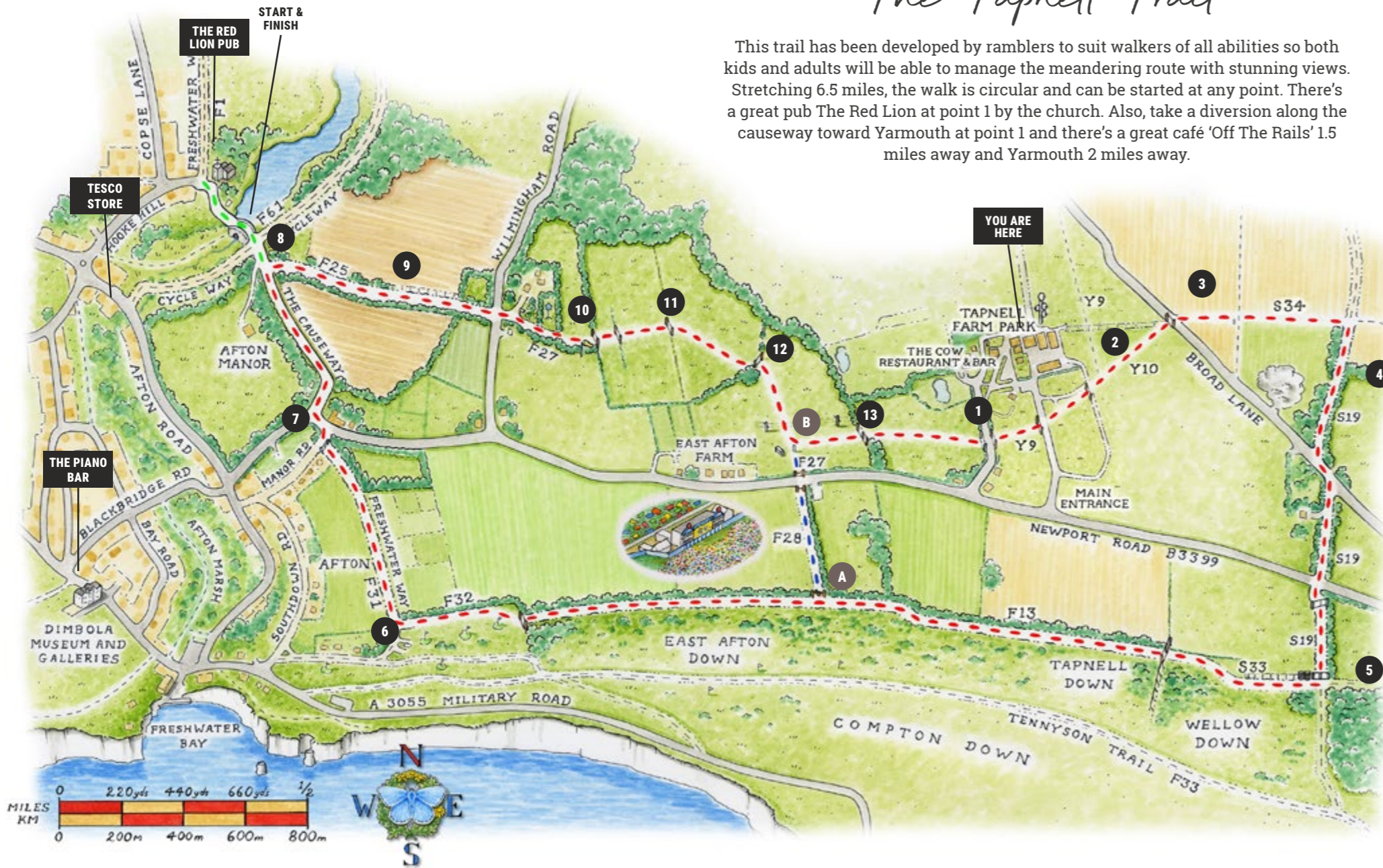
Wight Karting, PO33 1QS | 01983 565366
This is an outdoor track, but open in pretty much all weathers! Gear up & get your racing suit on!



The Isle of Wight is still in England so it can sometimes rain. Luckily at these places there is plenty of indoor fun to keep you busy until the sun starts shining again.

The Tapnell Trail

This trail has been developed by ramblers to suit walkers of all abilities so both kids and adults will be able to manage the meandering route with stunning views. Stretching 6.5 miles, the walk is circular and can be started at any point. There's a great pub The Red Lion at point 1 by the church. Also, take a diversion along the causeway toward Yarmouth at point 1 and there's a great café 'Off The Rails' 1.5 miles away and Yarmouth 2 miles away.



- 1 Cross the farm road and go through a kissing gate. Continue across the open fields and go through four kissing gates.
 - 2 At a waymark post continue ahead to find a gate in the left corner of the field.
 - 3 Cross a lane and go half right across a field path S34. Continue past a post and at a crossing path, turn right onto the Hamstead trail.
 - 4 The grass path becomes a soft gravel track and reaches a lane. Go left for 20yds and then take the right hand path S19 past 'The Quarries'. Continue on a grass path to reach the main road. Cross to farm gates and go through a metal bridlegate. Continue straight on S19 uphill and go through a bridlegate.
 - 5 Turn right onto a path which follows the bottom of the downs and continues ahead for 1.5 miles. The grass path can be muddy in parts, and eventually goes through a gate onto a golf course. The path, F32 Pilgrims Way continues between tees and greens, so beware of wayward shots! Just past the last green, head for the right hand corner to a hedge gap.
- SHORT CUT**
- A (A Turn right and follow the enclosed path F28 downhill to the gate. Cross the busy road, through the gate next to the 5 bar gate and in a few yards turn right to rejoin main route back (B).
 - B
- 6 Follow bridleway F31, part of the Freshwater Way. Cross the open field with paddocks on the right, and tall trees to reach a metal bridlegate. Turn right onto a track to reach the main road.
 - 7 Take care in crossing this road, then turn left and soon right onto the Causeway. Follow this lane as it goes left and then continue straight on.
 - 8 Pass the entrance to Afton Manor and then go right onto bridleway F25 opposite Woodland Cottage. At the estuary you could extend the walk following the easy access trail around the Yar estuary (4 miles).
 - 9 Follow the path across open countryside. Cross a lane into a drive, and then after 20 yds, follow footpath F27 through trees at a footpath sign.
 - 10 Emerge in an open field and small airstrip. Cross the field to a hedge gap and go through two gates. Continue across a field heading towards a farm complex on the hill, to find a wooden kissing gate in a wire fence.
 - 11 Cross a scrub area and then go half right across a field and continue through a kissing gate in the right hand corner of the field.
 - 12 Here turn right and cross a field, passing a telegraph pole, towards the downs, and well left of farm buildings, to a waymarked post in the field. A Here turn left on a new footpath (not marked on OS maps) and head to a metal farm gate with a side gate for pedestrians.
 - 13 Continue uphill in the middle of the field and go through a wooden gate to finish.

Walks on The Isle of Wight

There are some fantastic rambling opportunities on the Island, not least Tapnell's very own trail. The stunning countryside, coastline and undulating terrain make for brilliant walks. Below are a few of our favourites.

Guided walks

If you're looking for guided walks try out the Dinosaur Heritage Walk with a fossil hunt. There is even an app you can download that will explain all the sights and history of the landmarks you pass. The walk takes in Compton Bay and Yaverland.

For more information visit:

www.visitisleofwight.co.uk/dinosaur-island

Walking routes

If you search for the links below, you will find a huge selection of walking routes for all abilities and maps to download:

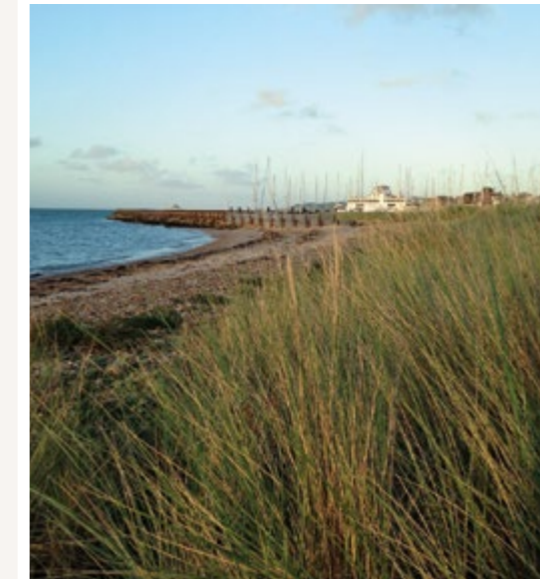
www.visitisleofwight.co.uk/things-to-do/walking/walking-routes

www.walkinginwight.co.uk

Rambles by bus

There are new mapped walks that are being produced by the Ramblers in conjunction with Southern Vectis, you can download GPX tracklogs for each of these here:

www.iowramblers.com/page46.htm



WIGHT CYCLE HIRE

#wightcycle

Cycle Hire at Tapnell Farm

Onsite cycle hire is available for our staying guests, courtesy of Wight Cycle Hire. Everything is provided in order for you to enjoy your day cycling, including a helmet, lock, route map and Island wide mechanical support.

To hire a bike please get in touch with them on 01983 761800 or email info@wightcyclehire.co.uk



To hire a bike simply visit the Cycle Hire Hub as shown on the map and follow the 5 easy steps. You'll be on your bike in no time!



For Peace of Mind



Local Doctor's Surgery
Brookside Health Centre,
Queens Road, Freshwater
Isle of Wight, PO40 9DT
01983 758998



Emergency Services
Call 999 or 112 in
emergencies and local
hospital & A&E is St.
Mary's in Newport.
If you need advice call
NHS on 111.



Local Supermarket
Tesco in Freshwater is only
five minutes drive away
and stocks all the food and
necessities you will need
during your stay.
Grocery deliveries from all
retailers welcome.



Launderette
Available in
Freshwater and
Yarmouth Harbour
Offices on the Quay



Dog Sitting
Pooch Patrol
poochesonpatrol@
gmail.com
07549 299336



Baby Sitting
Freedom Childcare
08453 300403
From £16 per hour
Local Babysitter
Contact Chloe
£15 per hour



Veterinary Services
Green and Forster, School
Green Road, Freshwater
Isle of Wight, PO40 9BB
01983 522 822



Caterers
Kevin Hendy:
07872137265
All About
Catering:
01983 248500



Taxis
Alpha Taxis: 01983 280280
I Cab: 07553 567567
Jay's Taxis: 07917 173865
Mick's Taxis: 01983 752936
Norton's Taxis: 01983 759955
Rayner's taxis: 01983 752784



**Electric Car
charging at Tapnell**
In The Cow,
Accommodation
and Farm Park car
parks.



Local Petrol Station
Located in
Freshwater just
along from the Tesco
supermarket
(PO40 9BE)
More available in
Newport



**Breakdown
Recovery**
Stag Lane Motors,
Newport
01983 522443



You can now purchase a tourist parking permit which will cover all on and off street parking areas which are managed by Isle of Wight Council. You can buy permits to cover the following time periods:

2 days - £20 | 3 days - £30 | 4 days - £40 | 7 days - £70 | 14 day - £140

You can order them through Pay By Phone on 01983 331331 or online at www.paybyphone.co.uk using location number 71000