

Welcome to Tapnell Farm

Dome Meadow | Safari Tents | Cabins | Modulogs | Pods | Cottages | Tapnell Manor

01983 758729 | www.tapnellfarm.com



Welcome to Tapnell Farm!

Inside this pack you'll find some useful information to make your stay as relaxing, or action packed, as possible. We really advise you take the time to read through this booklet (perhaps with a mug of tea or a glass of wine) as it will save you a lot of time!

For opening times and further information:

Tom's Eco Lodge

The Cow Restaurant & Bar

Burgers, Steaks, Vegetarian & Vegan

Tapnell Farm Park

Award-winning all weather family attraction

Isle of Wight Aqua Park

Archery & Axe Throwing, Football Golf and Clay Pigeon Shooting

www.tapnellfarm.com or ask a member of staff

If you have any questions please don't hesitate to contact:
Monday to Friday 9am – 5pm, Saturday & Sunday 9am – 3pm: 01983 758722
Out of hours: Chloe 07947090736

We hope you enjoy your stay!



©Skarsgard



Contents

The History of Tapnell Farm	4
What to do at Tapnell Farm	6
Farm Map	7
Tapnell Farm Park	8-9
Isle of Wight Aqua Park	10
Archery + Axe Throwing, Football Golf, Clay Pigeon Shooting	11
The Cow Restaurant & Bar, Farm Shop	12-13
Best Places for Breakfast	14
The Best Cafés for a Cup of Tea/Coffee	15
Fast and Easy Takeaway	16
Best Places for Posh Nosh!	17
Hidden Gems	18
Best Swimming Beaches	19
Best Views on the Island	20
Best Village Pubs with Tasty Grub	21
Things to do for all the family	22-23
Tapnell Trail Map	24
Walks on the Isle of Wight	25
Cycle Hire and Maps	26-27
For Peace of Mind	28





The History of Tapnell Farm

The Turney family has been in farming for over one hundred years and we took over the care of Tapnell and East Afton Farms in 1982. At its peak, the farm milked 800 cows and produced 24,000 litres of fresh wholesome milk 365 days of the year, no exceptions!

Today, we no longer milk cows at Tapnell, but the Farm has become the Isle of Wight's leading eco-tourism business and home to award-winning Tom's Eco Lodge, Tapnell Farm Park, an award-winning all weather family attraction and The Cow Restaurant & Bar.

Sustainability is at the heart of everything we do, whether taking water from our bore hole to supply the farm and accommodation, using the sun to make electricity for hundreds of homes, powering our heating systems with our biomass boiler or growing over 30 acres of new woodland and hedgerows. It's ingrained in everything we do.

The golden rule for us is to pass on our farm in better environmental and productive health than it was at the beginning of our life's tenure.

Sitting on the site of the 1970 Isle of Wight pop festival, our farm is surrounded by a patchwork of fields that form the pasture and meadows of the countryside, which gently undulate with Tapnell Down to the south and Hamstead Heritage Coast and coastal woodlands to the north. The picturesque chalk down grassland and forests to the south are not only part of the protected landscape but are also Sites of Special Scientific Interest and described by Natural England as being "probably the best example in Britain of chalk grassland under maritime influence."



Things to do at the farm

Guests discount codes will be provided in advance or can be found in your Welcome pack. If in doubt, please contact the accommodation team.

For details of attractions and to book: www.tapnellfarm.com/play

Tapnell Farm Park & Coffee House

Come rain or shine, there's so much to see and do, with just as much indoors as outdoors, including straw bale barn, go-karts and indoor soft play. Plus join our keepers for daily animal activities. Guests pay admission once and get unlimited entry during stay



Isle of Wight Aqua Park

The Island's only outdoor, floating Aqua Park! Wetsuits and buoyancy aids provided. Age 7+. Guests receive 25% discount.



Hire Extras

Make your stay with us extra special!

Hot Tub Hire (1-7 night available)

You are welcome to contact third party hot tub providers. Please contact us for preferred suppliers.

Bike Hire: Make the most of the rolling countryside, hire a bike and explore!

Contact Wight Cycle Bike Hire: 01983 761800

Food & Gift Hampers: please enquire or see website:

www.tapnellfarm.com/extras

The Cow Restaurant & Bar

Tuck into our delicious award-winning burgers – gluten free, vegetarian and vegan options too.

Book your table online: www.tapnellfarm.com/eat



Football Golf

The Island's first Football Golf course. 9 and 18 holes options. Under 14's must be accompanied by an adult. Guests receive 10% discount.



Tapnell Trail

Enjoy our popular 6 mile circular walking route that runs right through the middle of Tapnell Farm. Suitable for walkers of all abilities. Pick up a map from The Cow.



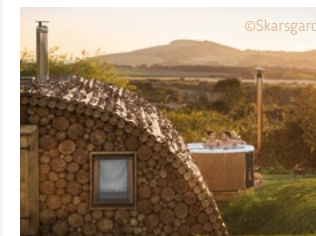
Archery & Axe Throwing

Whether you're a complete novice or modern day Robin Hood, our experienced team will ensure you get the most from your session. Minimum 2 per session. Age 11+. Guests receive 25% discount.



Clay Pigeon Shooting

Top Targets, based at the farm: shoot some clays from our straw traps or take your aim at our rifle shooting! Guests receive 10% discount.



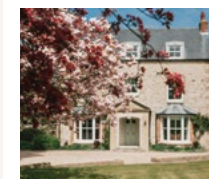
©Skarsgard

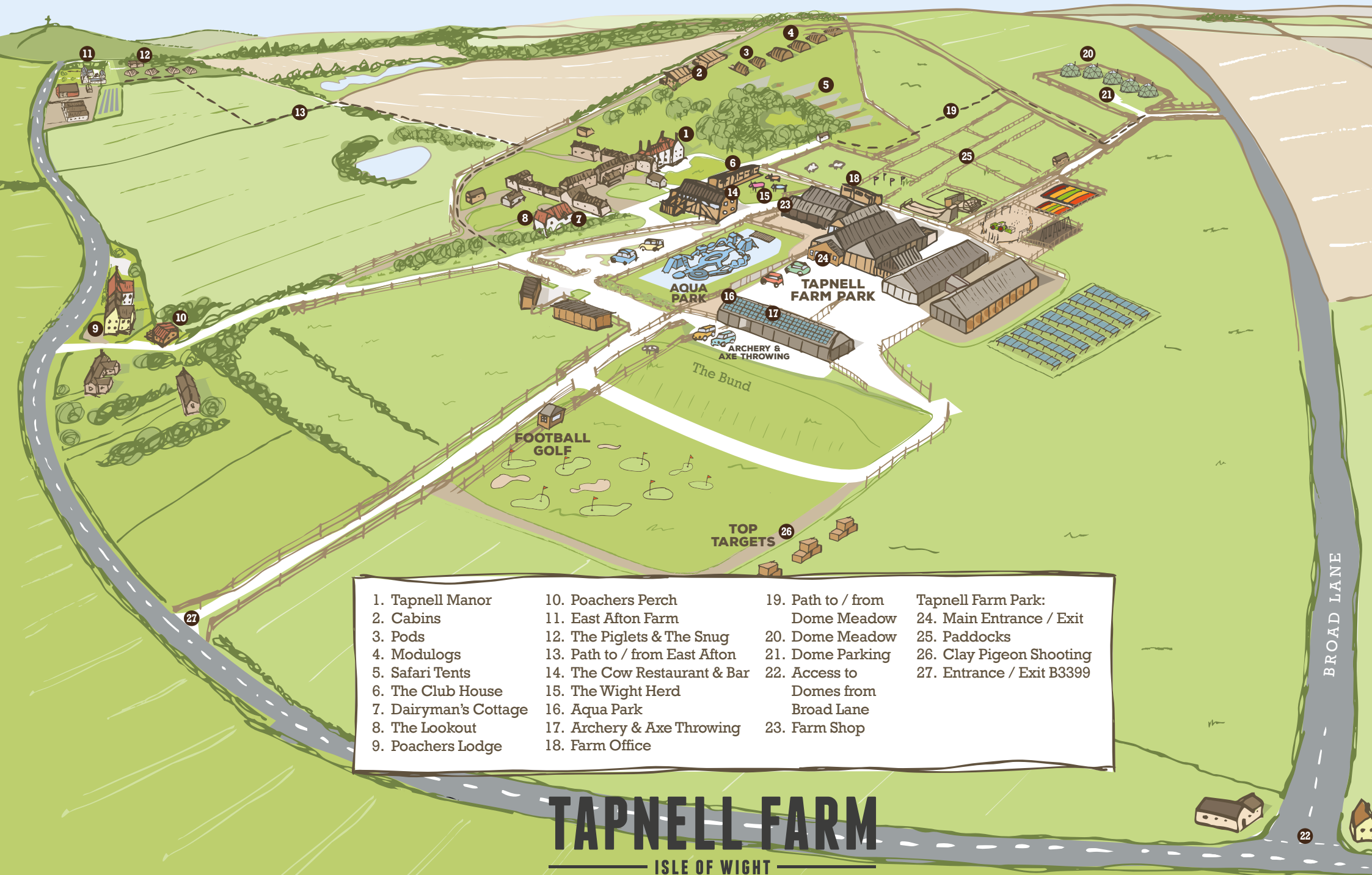


Weddings at Tapnell Farm

East Afton Farmhouse with 3 event barns and adjoining cottage is a wonderful venue for a big country house wedding and is licensed for ceremonies. Options include four day exclusive use hire from Thursday – Monday, or venue hire only Monday – Wednesday. Available all year round with capacity up to 200 guests. Accommodation for up to 17 included in exclusive use hire. For information:

www.eastaftonfarmhouse.com





1. Tapnell Manor

2. Cabins

3. Pods

4. Modulogs

5. Safari Tents

6. The Club House

7. Dairyman's Cottage

8. The Lookout

9. Poachers Lodge

10. Poachers Perch

11. East Afton Farm

12. The Piglets & The Snug

13. Path to / from East Afton

14. The Cow Restaurant & Bar

15. The Wight Herd

16. Aqua Park

17. Archery & Axe Throwing

18. Farm Office

19. Path to / from

Dome Meadow

20. Dome Meadow

21. Dome Parking

22. Access to

Domes from

Broad Lane

23. Farm Shop

Tapnell Farm Park:

24. Main Entrance / Exit

25. Paddocks

26. Clay Pigeon Shooting

27. Entrance / Exit B3399

TAPNELL FARM

ISLE OF WIGHT

BROAD LANE



TAPNELL FARM PARK

★ INDOOR AND OUTDOOR FUN ★

Set in acres of beautiful countryside, surrounded by amazing views of the Island, Tapnell Farm Park provides a safe, all-weather, fun filled attraction for all the family to enjoy.

There's so much to see and do, areas to explore and adventures to be had, with just as many indoors as outdoors - perfect for a full day's entertainment.

Don't miss our daily activities where you can meet the animals, greet and learn about our favourite furry friends - and make new friends too!





What's at Tapnell Farm Park...

The Soft Play Barn

Soft Play
Imagination Play
Toddler Zone

The Animal Barn

Entrance / Exit
Gift Shop
Meeting Point
Bugs and Beasties
Meet the Animals

The Adventure Barn

Pedal Go Karts
Mini Go Karts
Zip Wires
Straw Bale Play
Trampolines

Adventure/Events Barn

Seasonal Opening and Events

Don't Miss...

- 1 Mini Golf
- 2 Wallaby Walkabout
- 3 Meerkat Enclosure
- 4 Farm Park Footy
- 5 Activity Zone (seasonal opening)
- 6 Sledge Slides
- 7 The Look Out
- 8 Jumping Pillows
- 9 Playground
- 10 Giant Sand Pit and Ride-on Tractors
- 11 Spiders Web
- 12 Spacer Hopper Zone
- 13 Climbing Wall

Feeling Hungry?

TAPNELL FARM PARK
COFFEE HOUSE



The Coffee House is set right in the heart of the Farm Park, right next to our Play Barn, Animal Barn and Paddocks.

We offer a huge range of barista coffees, hot and cold drinks and a great selection of snacks, hot pastries, cakes and traybakes.

For something more substantial head over to The Cow Restaurant & Bar See page 12 for details



We serve a wide range of ice creams and lollies in the Coffee House and our Ice Cream Hut near the straw bale adventure barn will be open during the height of the season.

Don't miss our daily activities where you can meet the animals - including Paddock Feeds. Bugs & Beasties. Meerkat Talks. Wallaby Feeding and more!

www.tapnellfarm.com/play

www.tapnellfarm.com/play

The Isle
of Wight's
bounciest
and wettest
attraction is
here!

ISLE OF WIGHT

AQUA PARK

— TAPNELL FARM —

Over 20 obstacles to tackle, with plenty of giant free-fall
slides and fun (but challenging!) elements to explore!

Whatever the
weather, you're
guaranteed to
have a blast at
the Isle of Wight
Aqua Park!



Great fun for confident swimmers aged 7+ everyone will enjoy the thrill of the slip and slide action as you take on the epic challenge of the course.

Our on-site facilities include showers and toilets located outside and there's a spectator area for those watching the fun unfold. Changing rooms are available but limited to only one 'bubble' at a time, so please arrive in your shorts & t-shirt or swimwear ready to put a wetsuit and buoyancy aid over the top.

All sessions must be booked online in advance. Wetsuits and buoyancy aids are supplied, and you'll be given a safety briefing before-hand by one of our fully qualified team.



ISLE OF WIGHT FOOTBALL GOLF



Great inclusive activity, suitable for all ages as long as they can kick a ball! Football Golf uses the same rules as golf but instead players don't use a club, they kick a ball with the fewest number of kicks/shots possible to score in the hole.

All sessions must be booked online in advance

Under 14's must be accompanied by a responsible adult

We recommend group sizes of 4-5 max

Choose from either a 9-hole short course, a 9-hole long course or try your foot at both!



ARCHERY + AXE THROWING



Delivered in our purpose built ranges, housed inside a covered barn. Sessions run whatever the weather and are led by experienced and trained staff, ensuring quality coaching.

All sessions must be booked online in advance

Minimum booking of 2 people

Sessions last 50 minutes and include equipment and tuition

Axe Throwing and Archery are different activities that need to be booked separately.

All participants must be aged 11+



All equipment is provided and our team will ensure your introduction to clay pigeon and target shooting is safe and that you feel comfortable. An experienced instructor will be by your side throughout the activity

We have different sizes and gauges of shotguns rifles and pistols to suit each individual and we are happy to include children 10 years of age and up.



CLAY PIGEON SHOOTING

Tucked away at the edge of Tapnell Farm is an established shooting ground operated by Top Targets.



THE COW

AT TAPNELL FARM

ONE OF THE ISLAND'S UNIQUE RESTAURANTS, SET IN A CONVERTED SWISS BARN, SURROUNDED BY STUNNING VIEWS.

The Cow champions the finest home grown and locally sourced produce and is renowned for its delicious award-winning burgers, including gluten free, vegetarian and vegan choices. All orders are now made and paid for via *The Cow at Tapnell Farm App* which can be downloaded from Google Play or Apple App Store so you can choose whether to eat in (online booking essential) or eat outside on the terrace. Dogs welcome.



'Great Food, Great Beer, Great Deserts. Funky place to eat, drink and be merry and certainly we will go again.'



CHILDREN'S MENU

Our children's menu includes mini sizes of our burgers.





THE TAPNELL TRAIL

GREAT FOR WORKING UP
AN APPETITE OR WALKING
OFF A BIG LUNCH!

A popular 6-mile circular
walking route that can be
joined at any point and
which runs right through
the middle of Tapnell Farm.
Suitable for walkers of all
abilities. Map available
from The Cow.



THE WIGHT HERD

Take a wander round
outside and check out the
UK's first 'art herd'.



THE FARM SHOP

TAPNELL FARM

Please see welcome pack or website for opening times.

Our new Farm Shop is where you can
purchase fresh produce - fruit and veg from
local farms, locally sourced meats, cheeses
and eggs. We have the delicious Cook Range
of freezer meals as well as holiday essentials
and plenty of treats too! There's even pizza
dough and toppings if you fancy using our
pizza oven! Plus, a good selection of laundry
basics, toiletries and local gifts to take home.

We also serve fresh barista coffee
to takeaway.

Why not order a hamper in advance of your
stay, so it's ready on your arrival?

We have a wide selection of luxury hampers
including Campfire, Full English, Ultimate
Brunch, Deli and BBQ.

For details: www.tapnellfarm.com/farmshop

— COOK —
Remarkable Food For Your Freezer



Best Places for Breakfast

The first meal of the day is the most important meal of the day, that's a fact! Make sure to make the most of the Island's breakfast offerings because there are some seriously tasty options including the best Eggs Benedict and full English this side of The Solent. Here are a few ideas to pep you up for the day ahead.



The Piano Café & Mezze Bar, Freshwater Bay **PO40 9PY** | 01983 472874

You can find one of the tastiest Eggs Benedict on the Island here. The eggs are always cooked to perfection, the toast is chunky, and the hollandaise sauce is to die for. The selection of teas is huge, from Earl Grey to Orange Blossom Oolong.
10% off for guests when you spend over £10, just mention Tom's Eco Lodge.



Off The Rails, Yarmouth **PO41 0QT** | 01983 761600

Enjoy a spot of bird watching across the wetlands while eating a full English. Off The Rails also cooks up a mouth watering vegetarian breakfast – you can walk back to Tapnell Farm afterwards if you feel like burning a few calories!



Gossips Café, Yarmouth, Freshwater Bay **PO41 0NS** | 01983 760646

Fancy a full English before catching the ferry from Yarmouth? This café has the perfect location for a greasy fry up before a long trip home! At the start of the pier, the café has great views of the solent.



PO41, Yarmouth **PO41 0PB** | 01983 761105

For a lighter breakfast / brunch. Freshly baked pastries and good coffee.

The Best Cafes for a Cup of Tea / Coffee

Tea is important here in England – we are basically addicted to the stuff. So below are a few recommendations for the best cuppa on the island. And for those who need a more concentrated caffeine injection we've included a couple of coffee joints as well.



The Cow Restaurant & Bar, Tapnell Farm
01983 758725

We are going to blow our own trumpet here because we believe our coffee is up there with the best! We also have a tea selection guaranteed to satisfy all tastes.



The Terrace, Yarmouth
P040 ONT | 01983 303013

The Terrace is a new harbour-side restaurant in Yarmouth with amazing views across the harbour and out to the Solent.



The Piano Café & Mezze Bar, Freshwater Bay
P040 9PY | 01983 472874

Sam, the owner, is a good friend of Toms and knows a thing or two about coffee. We fully endorse his skills when it comes to rustling up the best caffeine shot in the area! **10% off for guests when you spend over £10, just mention Tom's Eco Lodge.**



P041, Yarmouth
P041 OPB | 01983 761105

P041 Coffee House is inspired by the vibrant artisan coffee culture revolutionising London's cafe scene. The cafe is both intimate and atmospheric serving gourmet coffee, a select range of loose leaf teas and a delicious array of homemade sweet and savoury treats.



Fast and Easy Takeaway

You certainly don't have to splash the cash to enjoy the best of the Island. In fact, most of the activities within this guide are all very reasonably priced and you'll find a number of family/group discounts. But we understand that eating out with a big family can add up so below are a few options where your credit card will still be intact after paying for the bill.



The Cow Restaurant | Available out of season, please check website
Delicious award-winning burgers – gluten free, vegetarian and vegan options too.



FUOCO Pizza P040 9UT | **01983 214430**
Neapolitan Wood Fired Pizzas. Closed Sundays.



Rainbow Fish & Chip Shop P041 9UR | **01983 752257**
Close by in the local village Freshwater serves locally caught fish open lunchtimes and evenings. Collection only. Closed Sundays and Mondays.



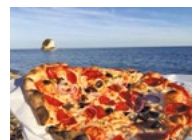
Double Dragon P040 9AB | **01983 754141**
Also in Freshwater, perfect if you are in the mood for a Chinese. This family run business delivers free on orders over £12. Closed Tuesdays.



Sunbo P039 0AT | **01983 759111**
In Totland is another Chinese we would definitely recommend. Closed Mondays.



Domino's Pizza P030 1LG | **01983 522700**
In Newport is a little further away but everybody that knows it loves it!



Wightwood Pizza | **07955 379642**
A vintage Citroën van with a wood fired pizza oven. On a Friday night in the summer, they park up at Freshwater Bay from 5am – 8pm. Check out their Facebook page to find out the other locations they'll be at that week as these change.



Jaffran Indian Restaurant & Takeaway P040 9AS | **01983 755121**
Open daily.

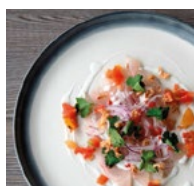
Best Places for Posh Nosh!

Sometimes it's worth forking out a little extra to mark a special occasion such as a birthday or wedding anniversary. But if you're staying at Tapnell Farm you're most likely on holiday, so go crazy! You don't need an excuse to go big! Below are fine dining options that will leave you feeling incredibly well catered for.



The Cow Restaurant & Bar, Tapnell Farm **P041 OYJ** | 01983 758725

Situated at the heart of Tapnell Farm in a converted Swiss barn, The Cow champions the finest home grown and locally sourced produce and is renowned for its delicious award-winning burgers and steaks.



The Terrace, Yarmouth **P040 ONT** | 01983 303013

The Terrace is the quayside restaurant in Yarmouth with amazing views across the harbour and out to the Solent. Friendly staff, excellent menu using locally sourced produce and great atmosphere.



Thompson's, Newport **P030 1JU** | 01983 526118

Thompsons Restaurant is a contemporary 'open kitchen' restaurant offering a delicious modern British menu inspired by the flavours of the Island and Robert's Experiences. Owner & head chef Robert Thompson was the youngest British chef to receive a Michelin star and showcases the Isle of Wight's produce and flavours in his food.



The George Hotel & Beach Club, Yarmouth **P041 OPE** | 01983 760331

Family friendly brasserie style restaurant with uninterrupted views of the Solent, beautiful walled garden terrace. The food is formal dining in a relaxed atmosphere.



The Hut, Colwell Bay **P040 9NP** | 01983 898637 - Seasonal Opening Times

Sunny seaside hangout in the day and atmospheric restaurant in the evening serving mouthwatering cuisine from lobster to catch of the day.



Smoking Lobster, Cowes **P031 7AY** | 01983 240916

The perfect combination of food, atmosphere at this thriving High Street restaurant. The menu has a range of small and larger plates featuring fish, shellfish, and meat as well as vegetarian options.

If you fancy something different:

On The Rocks, Yarmouth **P041 OPJ** | 01983 760505

The Island's only specialist Black Rock Grill experience! The food here is exceptional, especially the steak.



Hidden Gems

Here's some of the Island's best kept secrets. You might have to try a bit harder to get to these but they are definitely worth it.



Steepphill Cove, Ventnor | 17 miles away

Steepphill Cove is an unspoilt fishing cove with a safe, sandy beach. With only a handful of cottages, deckchairs, beach huts, lobster pots and an old donkey there's not a slot machine, car or burger in sight. Surrounding the Cove are fantastic coastal walks. Go west to the Botanical Gardens or east to Ventnor.



St Catherine's Lighthouse, Niton | 14 miles away

The view from the walk down to the lighthouse is stunning - imagine dramatic cliffs and tumbling landslips with St Catherine's Lighthouse perched on the edge. Tours of the lighthouse are very reasonable; however, the best bit is soaking up the unspoilt surroundings.



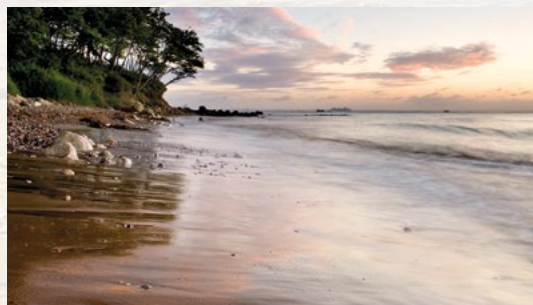
Quarr Abbey, Fishbourne | 15 miles away

Quarr Abbey is often dismissed as just a monastery, however it is a beautiful picturesque spot for a stroll. They also have a gift shop and tearooms with tasty local produce to eat or take home.



Hamstead Point Beach | 5 miles away

A fascinating shoreline for fossil hunters and bird watchers. Not one to visit if you want to go for a swim or sunbathe, but if you have a young Christopher Columbus with you then this is the perfect spot!



Priory Bay Beach | 20 miles away

Just round the coastline from Ryde, this beautiful secluded beach can be accessed at low tide if you are walking around from Ryde seafront. Don't forget to check tide times first to ensure you can get there and back in time!



The Duver, St Helens | 20 miles away

Once a Victorian golf course the Duver is now maintained by the National Trust. The sand dunes are bordered on the south by Bembridge Harbour and the Solent to the north. There are the ruins of St Helens Old Church and sea wall with brightly coloured beach huts and an excellent beach café.

Best Swimming Beaches

You are never far from the sea on the Isle of Wight and as you might expect, there are some brilliant locations to enjoy a swim. It's hard to narrow down three because you only need to find a deserted stretch of coastline at sunset to dip your toes and you'll be in heaven. There are restrictions in place on the Isle of Wight's main resort beaches between 1st May and 30th September which prevents dogs being allowed to use them. However outside of this season dogs are welcomed as with any of the other beaches.



Colwell and Totland Bays | 5 miles away

Again, you can reach Colwell and Totland Bays in a matter of minutes from Tapnell Farm and once there you will find a charming seafront that merges with a shallow expanse of water stretching far out into the ocean. It's possible to paddle out hundreds of meters and still be able to stand in the shallow waters. Head to The Hut afterwards for a glass of rosé, burger or sea food platter!



Compton Bay | 4 miles away

One of the Island's best kept secrets, Compton Bay is a two mile stretch of golden and dark sands framed by multi-coloured sandstone cliffs. If sand is not your thing, then you can relax on the grassy knolls overlooking the beach or climb on a board and surf some waves. Only a short drive from Tapnell.



Appley Beach, Ryde | 18 miles away

Ryde promenade stretches from the hovercraft terminal eastwards as far as Seaview. The main pleasure beach is from Appley to Puckpool. This fine sandy beach has numerous entrance points from the promenade. Deckchairs, sun loungers, windbreaks and other items can be hired on the beach. Watersports are popular towards the eastern end, especially kitesurfing.



Freshwater Bay | 3 miles away

Only a few minutes from Tapnell Farm, this bay has it all – cliffs, a long beach, shelter from the wind and a great swimming depth. Please be wary taking children to this beach as there can be a sudden dip followed by strong tides. Keep an eye out for the Wightwood pizza van where you can buy delicious, hand made pizzas to regain energy after a paddle, every nice Friday 5.30 – 7.30 throughout the summer!

Dog Friendly Beaches

Freshwater Bay | 3 miles away – Pebble beach with caves and rockpools that can be explored at low tides.

Compton Bay (Restricted) | 4 miles away – Accessed from car parks at either end.

Brook (Restricted) | 4 miles away – Sandy beach just along from Compton Bay with a rugged coastline and great views across the West of the Isle of Wight.

Fort Victoria | 5 miles away – Great walks and views across to the mainland.

Colwell Bay (Restricted) | 5 miles away (To right of slipway) – Quality Coast Award beach offers superb views across the Solent.

Players Beach | 16 miles away – Another of the Island hidden gems, tucked away below Ryde Golf Course at Binstead.

Bonchurch (Restricted) | 18 miles away – Horseshoe and Monks Bay beaches.

Bembridge | 19 miles away – Pebble and sand beach with a great collection of rock pools at low tide.

Seagrove | 19 miles away – Sandy expanse of beach located between the Seaview and St Helen's beaches.

Seaview | 19 miles away – Great sandy beach area, which is usually fairly quiet. The South beach is slightly more sheltered.

St Helens | 19 miles away – Sandy beach with excellent beach café. Easy access from here onto the sand dunes of the Duver.



Best views on the Island

Sometimes you just have to be honest – Tapnell Farm boasts the best views on the Island! Our elevated position offers panoramas of the English Channel, mainland, Afton & Tennyson Downs, and the stunning Tennyson Monument. But we understand variety is the spice of life so here are a few other options with idyllic lookout spots.



The Waterfront, Totland Bay
P039 0BQ | 01983 756969

This is the perfect place to catch the sun setting in the west with a glass of wine and a helping of King Prawn Linguine from the new “Mediterranean Kitchen.” Live bands also play every Friday.

Opening this summer, Totland Pier Café.



Smoking Lobster, Ventnor
P038 1JT | 01983 855938

Seafood specialists with great views out to sea on Ventnor beach front



The Blacksmiths Arms
P030 5SS | 01983 529263

The Blacksmith's Arms is a family-run Freehouse located in the heart of the Isle of Wight. Over 400 years old the pub has panoramic views stretching across miles of open countryside to the Western Solent.



The George Hotel & Restaurant, Yarmouth
P041 OPE | 01983 760331

A gracious 17th century former townhouse located right on the water's edge between the castle and pier in Yarmouth. Grab a pint of ale, watch the yachts bobbing up and down in the harbour and catch a glimpse of the ferries.



Best Village Pubs with Tasty Grub

The Isle of Wight is lucky enough to have a few breweries producing wonderful ales from Yates Brewery (Spring Fever, Sun Goddess, Golden Ale) to Goddard's Brewery (Squirrel, Inspiration, Ale of Wight). There are dozens of pubs on the island but we have chosen five of the best where you can neck an ale in serene surroundings only a stones throw from Tapnell Farm.



The Cow Restaurant & Bar, Tapnell Farm

The shortest of ambles from our accommodation. The Cow Restaurant & Bar offers beer, cider, and cocktails. You can also find the Island's best burger in the restaurant, that's a guarantee!



The Sun Inn, Hulverstone **P030 4EH** | 01983 741124

A short drive and you can be sitting in this 600-year-old pub's beer garden sipping thirst-quenching ale while soaking up glorious views in no time. It's a sheltered spot right in the sticks.



The Red Lion, Freshwater **P040 9BP** | 01983 754925

Few pubs can match the picturesque setting of Freshwater's Red Lion pub - it's tucked away next to a church and reachable via small country lanes one end and sleepy town thoroughfares the other. You can walk there from Tapnell!



The Pointer Inn, Newchurch **P036 0NN** | 01983 865202

The Pointer Inn is one of the oldest, most historic pubs on the isle of Wight. Famous for its food, ales and friendly service, this was Fuller's Country Village Pub of the Year in 2012 & 2013. It also was voted one of the best UK pubs for Sunday lunch.



The New Inn, Shalfleet **P030 4NS** | 01983 531314

A lovely little pub set in a dip specialising in fresh seafood dishes as well as other local produce.



The Highdown Inn, Totland Bay **P039 0HY** | 01983 752450

A small traditional country pub set in rolling countryside. Daily specials including seasonal local game and seafood.

Things to do for all the family

Coming to the Isle of Wight with the whole family is a good idea, there's so much to do together and you'll all be a lot closer at the end of it. From high-octane adventure sports to countryside rambling, there is something for every group.



The Isle of Wight Steam Railway **P033 4DS** | 01983 882204

Take a Ride behind one of the vintage steam locomotives for a journey back in time. Breathe in the evocative smells of a real steam railway, settle back in beautifully restored Victorian and Edwardian carriages and enjoy a unique view of some of the Island's unspoilt countryside.



Robin Hill Country Park **P030 2NU** | 01983 527352

Set in 88 acres of beautiful countryside, Robin Hill, the Island's favourite award-winning country attraction. With great rides – including the 1/4 mile downhill toboggan – amazing falconry displays, adventure play for fun loving families and children, plus relaxing woodland gardens, ponds and walks.



Goodleaf Tree Climbing, Ryde **P033 1ND** | 0333 8001188

If you are after an even more spectacular view than Tapnell Farm has to offer it's worth trying Goodleaf Tree Climbing. Learn the ropes with qualified and experienced instructors who'll take you to the canopy in Ryde where you can enjoy views of the beautiful countryside and coast while relaxing in a tree top hammock.



The Garlic Farm Restaurant, Shop, and Café, Newchurch **P036 0NR** | 01983 865378

The perfect place to take the entire family. You can grab some scrumptious food from the café or garlic inspired produce from the shop and the sprawling grounds are ideal for children to explore.



Wight Cycle Bike Hire **P041 0QT** | 01983 761800

They offer day hire for £14, with free delivery island wide if the total fee is more than £25 (2 bikes or more). Booking needs to be made before 3pm the day before. Hire includes: helmet, lock, maps and maintenance support. **10% off for guests & free delivery**



Blackgang Chine **P038 2HN** | 01983 730330

Overlooking the south coast of the Island, Blackgang Chine offers an eclectic mix of attractions, magical theme worlds, exciting rides and new adventures around every corner.



Hill Farm Stables Horse Riding, Freshwater **P040 9TQ** | 01983 752502

There are some great opportunities to go horse riding on the island – what better way to discover the awe-inspiring coast and countryside.



Tapnell Farm Park
P041 OYJ | 01983 758722

The Farm Park occupies the old dairy building where once 800 cows patiently queued up to be milked. Now there is a soft play barn, animal encounters, giant jumping pillow, straw bale barn, paddock with wallabies and a café.



Chessell Pottery Barns
P041 OUE | 01983 531 248

Chessell Pottery is a small working pottery on the Isle of Wight, where you will find pottery painting, studio and café serving a huge range of cakes, lunches and treats.



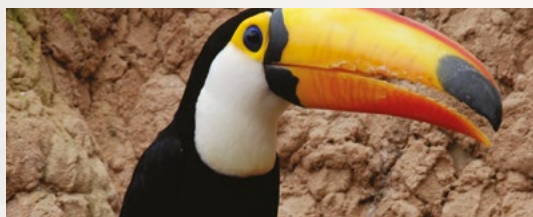
Isle of Wight Aqua Park at Tapnell Farm
P041 OYJ | 01983 758722

Splash, slide and laugh your way round the Island's only outdoor Aqua Park! Over 20 obstacles to tackle, with plenty of free-fall slides and fun elements to explore. Great fun for confident swimmers aged 8 and over.



Monkey Haven
P030 2NB | 01983 530885

An award-winning sanctuary for monkeys, birds and reptiles. Animals include eagle-owls, gibbons and lemurs, events include keeper talks and marmoset encounters.



Amazon World
P036 OLX | 01983 867122

Amazon World Zoo Park has a huge range of unusual rare and exotic animals. At the last count it was somewhere in the region of 200 different species, spanning the entire animal kingdom!



Ryde Superbowl
P033 2EL | 01983 617070

Ryde Superbowl offers full bowling facilities and a fully-licensed café-bar, open seven days a week, 364 days a year.



Dinosaur Isle
P036 8QA | 01983 404344

Located in Sandown, purpose built Dinosaur Isle provides the space and facilities to properly display and conserve the rich geological collections. There are over 1000 fossils on display!



Wight Karting
P033 1QS | 01983 565366

This is an outdoor track, but open in pretty much all weathers! Gear up & get your racing suit on!



The Isle of Wight is still in England so it can sometimes rain. Luckily at these places there is plenty of indoor fun to keep you busy until the sun starts shining again.

The Tapnell Trail

This trail has been developed by ramblers to suit walkers of all abilities so both kids and adults will be able to manage the meandering route with stunning views. Stretching 6.5 miles, the walk is circular and can be started at any point. There's a great pub The Red Lion at point 1 by the church. Also, take a diversion along the causeway toward Yarmouth at point 1 and there's a great café 'Off The Rails' 1.5 miles away and Yarmouth 2 miles away.



1 Cross the farm road and go through a kissing gate. Continue across the open fields and go through four kissing gates.

2 At a waymark post continue ahead to find a gate in the left corner of the field.

3 Cross a lane and go half right across a field path S34. Continue past a post and at a crossing path, turn right onto the Hamstead trail.

4 The grass path becomes a soft gravel track and reaches a lane. Go left for 20yds and then take the right hand path S19 past "The Quarries". Continue on a grass path to reach the main road. Cross to farm gates and go through a metal bridlegate. Continue straight on S19 uphill and go through a bridlegate.

5 Turn right onto a path which follows the bottom of the downs and continues ahead for 1.5 miles. The grass path can be muddy in parts, and eventually goes through a gate onto a golf course. The path, F32 Pilgrims Way continues between tees and greens, so beware of wayward shots! Just past the last green, head for the right hand corner to a hedge gap.

SHORT CUT

A (A Turn right and follow the enclosed path F28 downhill to the gate. Cross the busy road, through the ga next to the 5 bar gate and in a few yards turn right to rejoin main route back (B).

6 Follow bridleway F31, part of the Freshwater Way. Cross the open field with paddocks on the right, and tall trees to reach a metal bridlegate. Turn right onto a track to reach the main road.

7 Take care in crossing this road, then turn left and soon right onto the Causeway. Follow this lane as it goes left and then continue straight on.

8 Pass the entrance to Afton Manor and then go right onto bridleway F25 opposite Woodland Cottage. At the estuary you could extend the walk following the easy access trail around the Yar estuary (4 miles).

9 Follow the path across open countryside. Cross a lane into a drive, and then after 20 yds, follow footpath F27 through trees at a footpath sign.

10 Emerge in an open field and small airstrip. Cross the field to a hedge gap and go through two gates. Continue across a field heading towards a farm complex on the hill, to find a wooden kissing gate in a wire fence.

11 Cross a scrub area and then go half right across a field and continue through a kissing gate in the right hand corner of the field.

12 Here turn right and cross a field, passing a telegraph pole, towards the downs, and well left of farm buildings, to a waymarked post in the field. A Here turn left on a new footpath (not marked on OS maps) and head to a metal farm gate with a side gate for pedestrians.

13 Continue uphill in the middle of the field and go through a wooden gate to finish.

Walks on The Isle of Wight

There are some fantastic rambling opportunities on the Island, not least Tapnell's very own trail. The stunning countryside, coastline and undulating terrain make for brilliant walks. Below are a few of our favourites.

Guided walks

If you're looking for guided walks try out the Dinosaur Heritage Walk with a fossil hunt. There is even an app you can download that will explain all the sights and history of the landmarks you pass. The walk takes in Compton Bay and Yaverland. For more information visit:

www.visitisleofwight.co.uk/dinosaur-island

Walking routes

If you search for the links below, you will find a huge selection of walking routes for all abilities and maps to download:

www.visitisleofwight.co.uk/things-to-do/walking/walking-routes

<http://www.walkinginwight.co.uk/>

Rambles by bus

There are new mapped walks that are being produced by the Ramblers in conjunction with Southern Vectis, you can download GPX tracklogs for each of these here:

<http://www.iowramblers.com/page46.htm>





Cycle Hire at Tapnell Farm

Onsite cycle hire is available for our staying guests, courtesy of Wight Cycle Hire. Everything is provided in order for you to enjoy your day cycling, including a helmet, lock, route map and Island wide mechanical support.

To hire a bike please get in touch with them on 01983 761800 or email info@wightcyclehire.co.uk



The Needles

Alum Bay

The Needles Park

Alum Bay New Road

Warren Farm

Alum Bay Old Road

Moons Hill

Highdown Inn

Tennyson Monument

Farringford

Dimbola Lodge

Piano Bar

Orchard Brothers

Stoats Farm

Queens Rd

Manor Rd

Southdown Rd

Totland Bay

Colwell Bay

The Hut Colwell

Heathfield Campsite

Golden Hill Country Park

Wight Glamping

Red Lion

The End of the Line

Hooke Hill

Causeway

B3399

Colwell Bay

West Hill Ln

Verdi's Cafe

West Bay Club & Spa

Norton Grange

Ferry Port

Yarmouth

Off The Rails

Thorley Street

Wilmington Lane

Wilmington Lane

Fort Victoria

Verdi's Cafe

West Hill Ln

West Bay Club & Spa

Norton Grange

Ferry Port

Yarmouth

Off The Rails

Thorley Street

Wilmington Lane

Wilmington Lane

Routes

Freshwater Bay

Ferry Route

Needles

Yarmouth - Fort Victoria

Newtown

Coastal Explorer

Tennyson Tester

Easy

Moderate

Hard

Bridleways

Cafes

Pubs/Bars

Viewpoint

Descents

Ascents

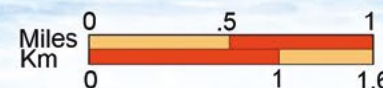
Camping

Good photos

Electric charge points

Electric charge points

Electric charge points





For Peace of Mind

Making your visit to Tapnell Farm Safe

Please be assured, the safety of our customers and staff is our highest priority and whilst we aim for your visit with us to be as 'normal' as possible, additional hygiene and safety measures, in line with Government guidelines, have been put in place, for everyone's peace of mind.

For more details:
tapnellfarm.com/news/making-your-visit-to-tapnell-farm-safe



Local doctor's surgery
 Brookside Health Centre,
 Queens Road, Freshwater
P040 9DT
01983 758998



Emergency services
 Call 999 or 112 in emergencies and local hospital & A&E is St. Mary's in Newport. If you need advice call NHS on 111.



Local supermarket
 The Co-op in Freshwater, only five minutes drive away, stocks all the food and necessities you will need during your stay.
Grocery deliveries from all retailers welcome



Baby Sitting
 Freedom Childcare
 08453 300403
 From £16 per hour
 Local Babysitter
 Contact Chloe
 £12 per hour



Veterinary services
 Green and Forster, School Green
 Road, Freshwater P040 9BB
01983 522 822



Caterers
 Kevin Hendy **07872137265**
 All About Catering **01983 248500**
 Isle of Wight Caterers
01983 855022



Taxis
 Alpha taxis: **01983 280280**
 Jay's Taxis: **07917 173865**
 Mick's Taxis: **01983 752936**
 Norton's Taxis: **01983 759955**
 Rayner's taxis: **01983 752784**



Local petrol station
 Located in Freshwater just along from the Co-op supermarket
(P040 9BE)



Breakdown recovery
 Stag Lane Motors, Newport
01983 522443



You can now purchase a tourist parking permit which will cover all on and off street parking areas which are managed by Isle of Wight Council. You can buy permits to cover the following time periods:

2 days - £12.60 | 3 days - £18.90 | 4 days - £25.20 | 7 days - £44.10 | 14 day - £88.20

You can order them through Pay By Phone on **01983 331331** or online at www.paybyphone.co.uk using **location number 71000**.